

Con-Pearl[®] van lining

We know what is important for van linings:

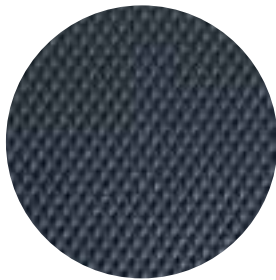
- **lightweight**
- **high stability**
- **and durable surfaces.**

Our Con-Pearl[®] van floorings and van liners are available for all kinds of vans such as Mercedes-Benz Sprinter, Peugeot Expert, VW Caddy and Ford Transit.



Our van floorings

Allround



TPO-Surface

The all-around floor, with the ideal balance between stability and slip resistance, safe and longlasting in one solution, for various applications.

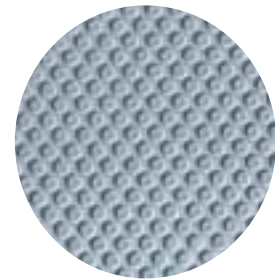
Strong



PP-Mesh Surface

Rubust and adapted for heavy duty applications, especially in the construction industry. Surface made of thermally solidified mesh.

Safestep

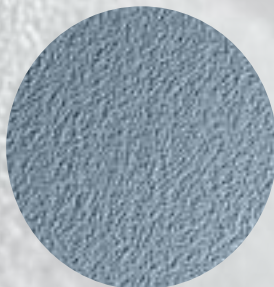


TPO-Surface

Excellent anti-slip properties, even with high use and difficult conditions. Ideal for commercial parcel service vans.

Our van liners

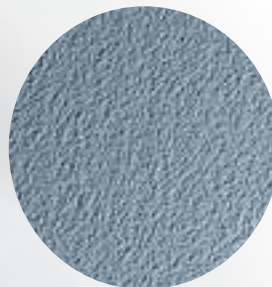
Allround



1-sided rough texture
1,500 g/m^{2*}

Functional and versatile – a durable lining for all vans.

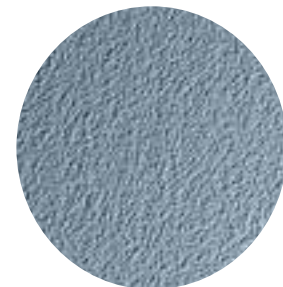
Strong



1 – or 2- sided rough texture
1,800 g/m^{2*}

Extremely strong – especially for small shipment transport vans. Ideal protection for van interiors.

Flex



1 – or 2- sided rough texture
1,340 g/m^{2*}

Ultra lightweight and flexible – foam core allows material to easily contour to the vehicle interior.

Con-Pearl® van lining

Top features

- extreme weight reduction (approx. 65% vs. wood)
- increased fuel efficiency (approx. 300 €/year)
- protects the vehicle body against damages, secures the maximum value in leasing return
- increased vehicle load/payload
- splinter-free and almost shatter resistant
- easy to clean
- high quality appearance



Example standard van L3

weight comparison:

Van flooring approx. 6.70 m²

wood: = 64.49 kg
Con-Pearl® : = 29.06 kg

Van liners approx. 16.05 m²

Wood: = 68.85 kg
Con-Pearl® : = 24.08 kg

weight savings per LCV = **80.20 kg**

fuel savings:

conditions:

mileage per LCV and year 75,000 km
average cost of diesel fuel: 1€
fuel savings per 100 km
100 kg weight saving = ca. 0.5 liter

calculation:

100.00 kg => 0.5 liter fuel savings
80.20 kg => 0.401 liter fuel savings

75,000 km * 0.401 l / 100 km * 1 €/l = **300.75€**

You will save more than 300,- € per LCV/year compared to wooden lining!



Additional advantages

- recyclable
- easy handling
- mould and rot resistant
- different nonslip surfaces
- wide range of processing possibilities, such as: milling (*2/3 faster than wood*), laser and die cutting